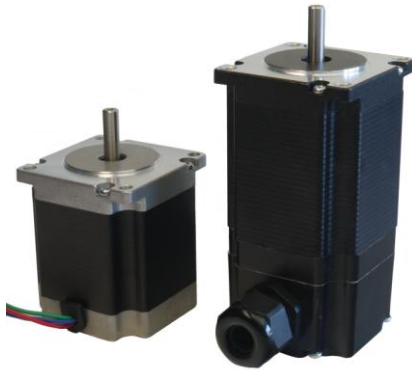


# Produkt Info / Product Information



## 2 Phasen Schrittmotor 2 Phase Stepper Motor SM223[S/M/L]-[K]xx

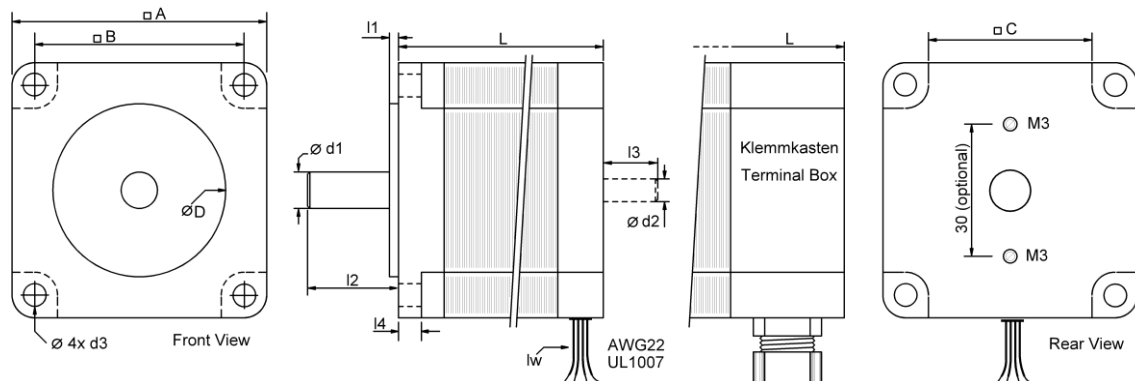
[S/M/L]=[short/mid/long]  
[K]=[Klemmkasten Terminal Box]



### Technische Daten / Specifications: bipolar parallel

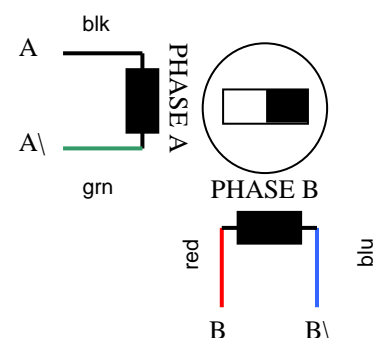
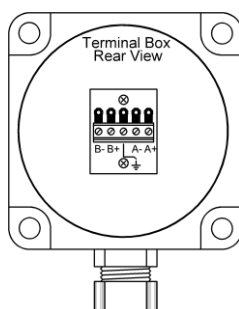
Type	Haltemoment Hold. Torque [Nm]	Strom Current [A]	Widerstand Resistance [Ω]	Induktivität Inductance [mH]	Rotorträgheit Rotor Inertia [kgm <sup>2</sup> x 10 <sup>-4</sup> ]	Anschluß Wiring	Gewicht Weight [kg]
SM223S	1,1	4,2	0,4±10%	1,2±20%	0,28	4Litzen Leads IP30 [K] PG19 IP51	0,65 [K]0,75
SM223M	1,5		0,55±10%	1,2±20%	0,38		0,80 [K]0,90
SM223L	1,8		0,6±10%	1,8±20%	0,44		1,00 [K]1,10
	Temp. Max	Ambient Temp.	Isolation	Dielectric	Radial Play	Radial Force	Axial Force
	80°	-20...50°	100MΩ/500V	500Vac / 1min	0,02mm max	75N max	15N max

### Abmessungen / Dimensions: [mm]



Type	A	B	C	D	L	d1	d2	d3	l1	l2	l3	l4	lw
SM223S	56	47,14	38	38,1	56 [K]85	6,35	---	5	1,6	21	---	5	300
SM223M					64 [K]94								
SM223L					76 [K]106								

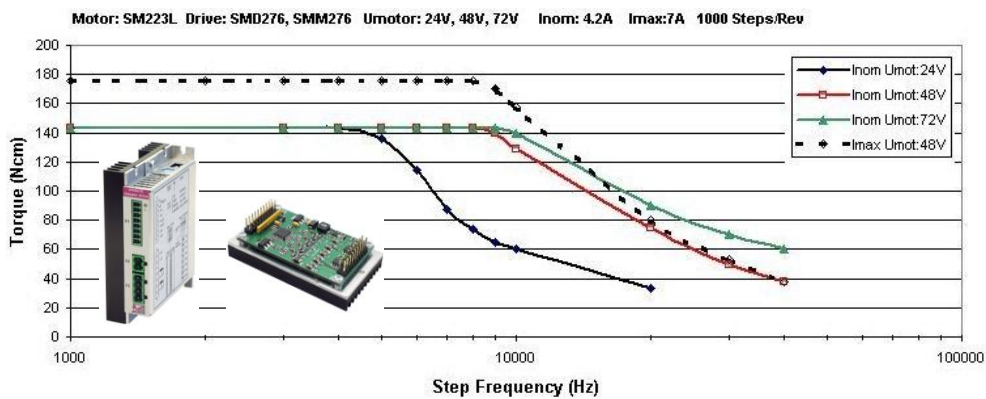
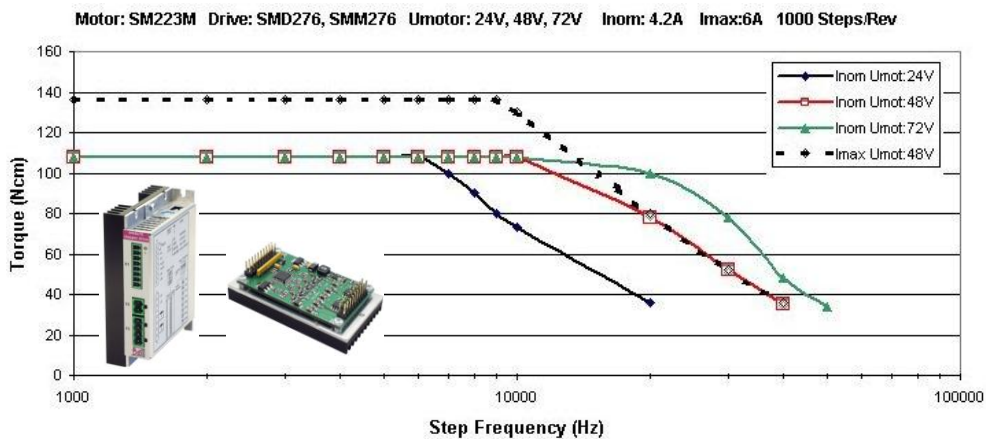
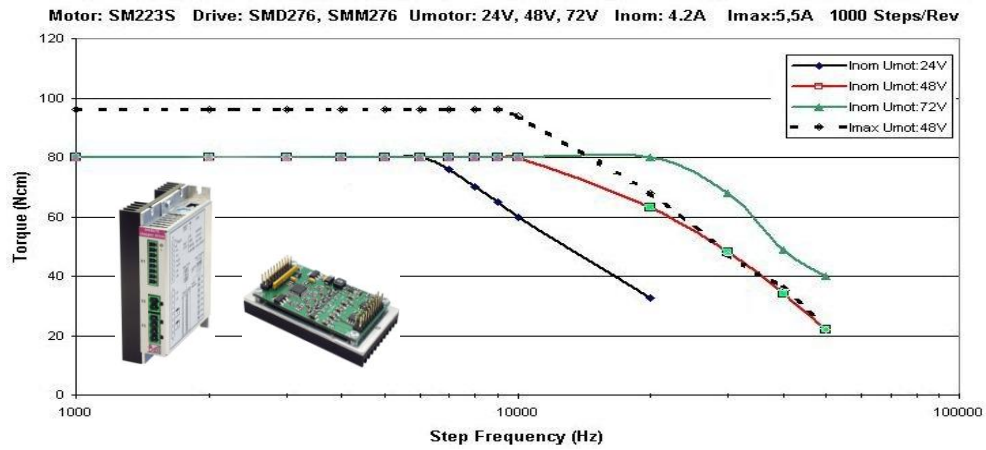
### Anschlüsse und Litzenfarben Wiring and color of leads:



### Industrial Stepper Drive Solutions

# Drehmomentkurven

## Torque Curves



**Industrial Stepper Drive Solutions**